

Using IATI data to enhance Bangladesh's AIMS

Presentation to IATI Steering Committee, 3rd December 2015

Current situation

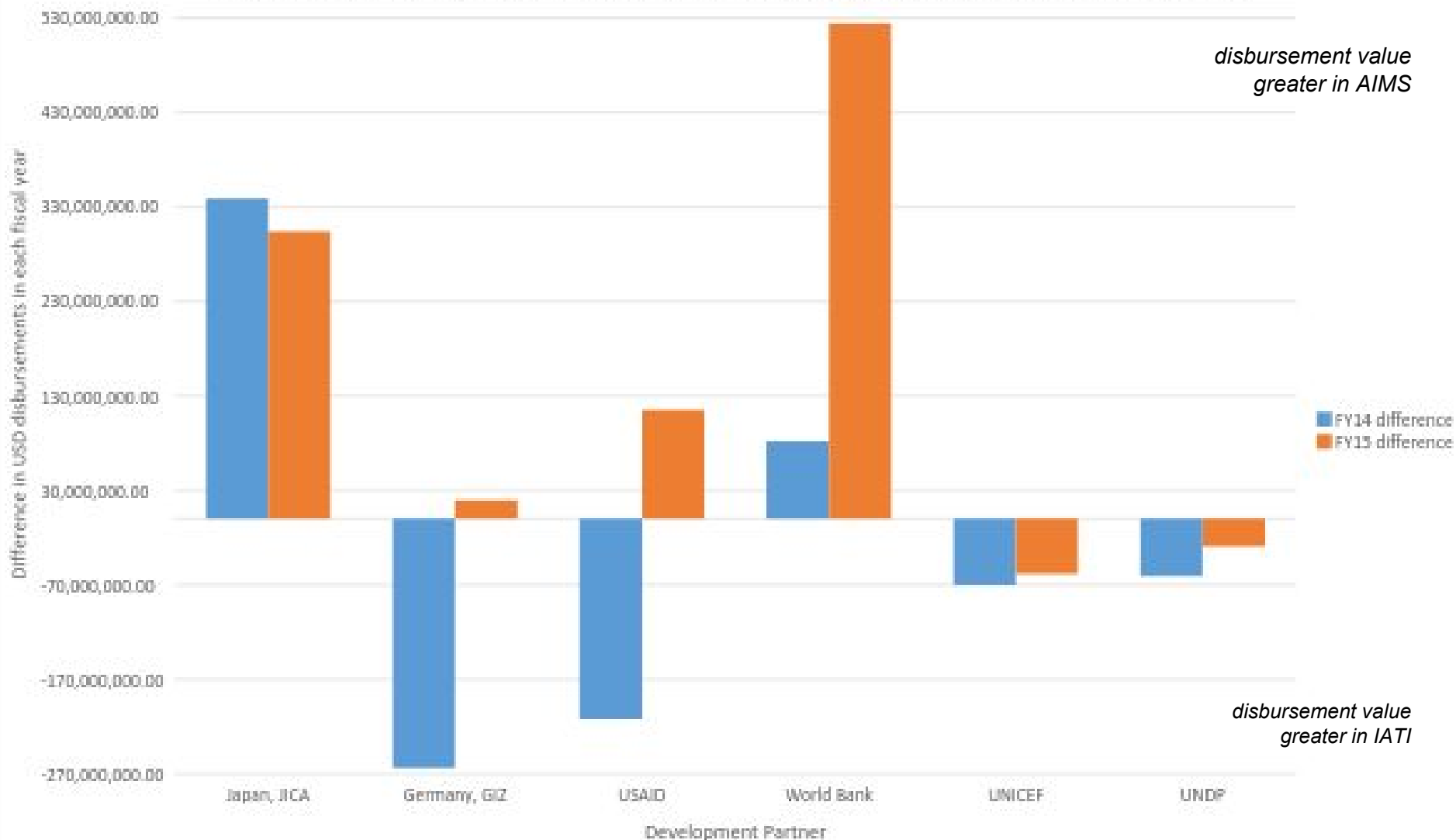
- Partner countries need data
- IATI has data
- Should be easy
- But the structure of aid is complicated – the data is too
- Human decisions are required – with a human interface
- This work is to produce that interface

How should IATI help?

- Donors have to enter projects manually themselves
- Government was pushing donors to fill out AIMS in advance of Donor Partner Forum
- Several donors raised issues around burden or lack of capacity
- Reduce burden from data entry
- Increase data quality in AIMS

Data quality

Difference in FY14 and FY15, for organisations with > USD 50 million difference in FY14



IATI data in Bangladesh

Two distinct issues for using IATI data:

1. Data quality issues
 - DPs need to address these issues themselves - work with them
 - not let this stop us using the data that is there
2. **Complexity in the way data is published in IATI and relates to other activities**

No one-click import

- Merging same project reported by different orgs
- Exclude admin components not reportable to AIMS
- Handle unrecognised projects (regional, miscoded)
- Handle very granular units of aid
- Language issues
- Additional fields required by AIMS

Humans have to take these decisions, and take ownership for the data they enter

What does this look like?

1. Automatically retrieve IATI data
2. Line it up side by side with the projects in the AIMS

Line up projects

IATI-AIMS Import mockups

Step 1: Matching and grouping

Next »

Options -

Netherlands

Match projects / Select fields

Step 1: Match your projects

Begin importing your projects from IATI to the AIMS by dragging projects from the left to the related project in the AIMS. In this step, we're just trying to establish the relationship between the two sets of projects – **no data will be imported at this stage.**

IATI Projects

Water Mgmt.Impr.Proj WB

Reported by: Netherlands

1. Institutional reform of the Water sector institution 2. Development of a rehabilitation and o & m strategy of coastal and river polders 3. Rehabilitation of polders and improvement of water management

Start date 2004-07-01

End date 2015-12-31

AIMS Projects

WATER MANAGEMENT IMPROVEMENT PROJECT

Reported by: World Bank

Start date 2004-07-01

End date 2015-12-31

Urban Dredging Project

Reported by: Netherlands

Start date 2014-01-01

What does this look like?

1. Automatically retrieve IATI data
2. Line it up side by side with the projects in the AIMS
3. Group and match activities - between IATI data and the AIMS, but also between different organisations: avoid double counting, co-financing, trust funds, etc.

Match and group data

IATI-AIMS Import mockups

Step 1: Matching and grouping

Next »

Options ▾

Netherlands

Match projects / Select fields

🔗 Step 1: Match your projects

Begin importing your projects from IATI to the AIMS by dragging projects from the left to the related project in the AIMS. In this step, we're just trying to establish the relationship between the two sets of projects – **no data will be imported at this stage.**

IATI Projects

AIMS Projects

Water Mgmt.Impr.Proj WB

Reported by: Netherlands

1. Institutional reform of the Water Management Board
Development of a rehabilitation and o & m strategy of coastal
and river polders 3. Rehabilitation of polders and improvement
of water management

Start date 2004-07-01
End date 2015-12-31

WATER MANAGEMENT IMPROVEMENT PROJECT

Reported by: World Bank

Start date 2004-07-01
End date 2015-12-31

Urban Dredging Project

Reported by: Netherlands

Start date 2014-01-01

What does this look like?

1. Automatically retrieve IATI data
2. Line it up side by side with the projects in the AIMS
3. Group and match activities - between IATI data and the AIMS, but also between different organisations: avoid double counting, co-financing, trust funds, etc.
4. Decide which source has the best data

Select and adjust fields

[Match projects](#) / [Select fields](#)

Step 2: Select fields

Please select which data to use for each project. **No data will be imported at this stage.**

WATER MANAGEMENT IMPROVEMENT PROJECT

Multi-donor trust fund

Title

<input checked="" type="radio"/>	WATER MANAGEMENT IMPROVEMENT PROJECT	AIMS
<input type="radio"/>	Water Management Improvement Project	World Bank 
<input type="radio"/>	Water Mgmt.Impr.Proj WB	Netherlands 

Delivery

- Open source, reports, specification and code on microsite with code
- Independent module designed to be applicable to all AIMS
- Bangladesh's contribution to IATI

Timeline

- Complete – initial scoping and design
- Next week – procurement begins
- January – development commences
- March – working process for DPs to use

Thanks / Questions?

Mark Brough: mark@brough.io

Matt Geddes: work@mattgeddes.co.uk

Reports, documentation, code:
<http://bd-iati.github.io>